

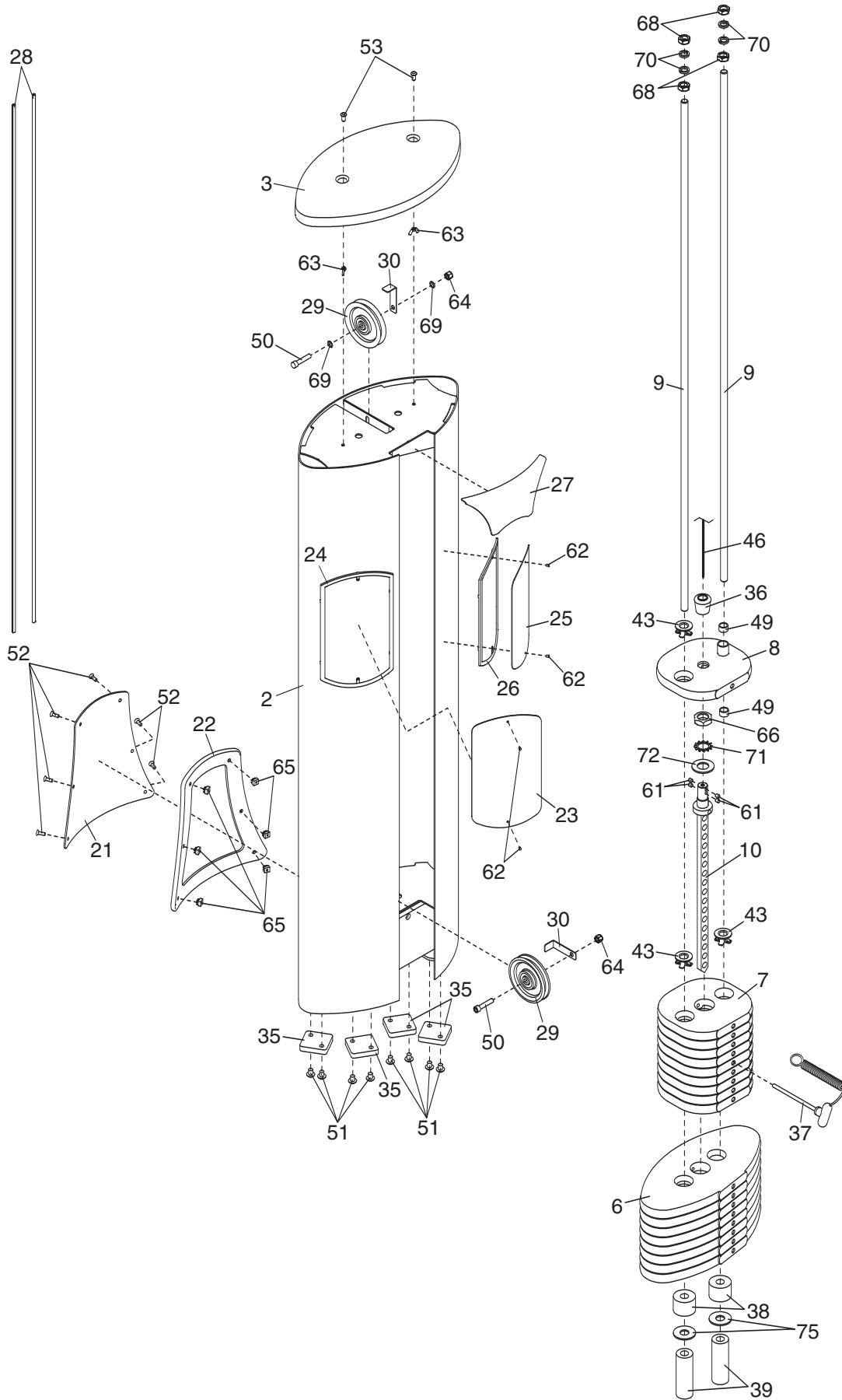
GZFI8156.1

<u>Key</u>	<u>Part Number</u>	<u>Description</u>	<u>Qty.</u>
1	GZ5543	BASE	1
2	GZ5562	TOWER	1
3	GZ3453	TOWER CAP	1
4	GZ5544	CAM	1
5	GZ5545	LONG PIVOT ARM	1
6	GZ30599	20 LB. WEIGHT	8
7	GZ30598	10 LB. WEIGHT	9
8	GZ4392	TOP WEIGHT	1
9	GZ3248-10	WEIGHT GUIDE	2
10	GZ5483	WEIGHT ROD	1
11	GZ1476	LONG AXLE	1
12	GZ1792	PIVOT ROD	1
13	GZ2340	PIVOT BRACKET	1
14	GZ5108-56	SEAT	1
15	GZ5108-11	BACKERST	1
16	GZ5108-58	LUMBAR SUPPORT	1
17	GZ1730	HANDGIRP	2
18	GZ9354	FOOT REST	1
19	GZ3523	COUNTER WEIGHT	1
20	GZ5549	BACKREST PLATE	1
21	GZ30828	ACCESS PANEL	1
22	GZ1751	ACCESS PANEL FRAME	1
23	GZ30348	LONG PANEL	1
24	GZ1566	LONG PANEL FRAME	1
25	GZ30347	SHORT PANEL	1
26	GZ1567	SHORT PANEL FRAME	1
27	GZ3516	COVER	1
28	GZ1504	TRIM	2
29	GZ1003-08	PULLEY	3
30	GZ3102	CABLE GUARD	2
31	GZ1816	FOOTREST COVER	1
32	GZ30218	ANCHOR STRAP	1
33	GZ1486	SMALL BASE FOOT	1
34	GZ1111	LARGE BUMPER	2
35	GZ1517	TOWER FOOT	4
36	GZ1353	COUPLER COVER	1
37	GZ1754	WEIGHT PIN	1
38	GZ1678	WEIGHT BUMPER	2
39	GZ30629	WEIGHT SPACER	2
40	GZ5554	SWIVEL BRACKET	1
41	GZ1580	LARGE BASE FOOT	1
42	GZ1501	POP PIN	1
43	GZ1391-01	WEIGHT INSERT	35
44	GZ1757	HANDGRIP CAP	2
45	GZ1011-01	1" BEARING	4
46	GZ5020-37	CABLE	1
47	GZ1011-02	PIVOT PULLEY BEARING	2
48	GZ1100	SMALL BUMPER	4
49	GZ1020	GUIDE BUSHING	2
50	GZ1013-04	3/8 X 2" BOLT	2
51	GZ1012-07	3/8 X 1/2" BUTTON SCREW	12
52	GZ1038-06	1/4 X 1" SCREW	6
53	174796	1/4 X 1" BUTTON SCREW	2
54	GZ1013-02	3/8 X 1 3/4" BOLT	1
55	GZ1013-11	3/8 X 4 1/2" BOLT	2
56	GZ1012-16	5/16 X 5/8" BUTTON SCREW	4
57	192773	3/8X3/4" NON-PATCH BTTN	8
58	GZ1761	SMALL SET SCREW	8
59	GZ1009-03	1/2 X 1 1/4" SCREW	2

60	GZ1013-12	3/8 X 1 1/4" BOLT	2
61	GZ1673	LARGE SET SCREW	4
62	GZ1021-01	RIVET	4
63	GZ1430	WING NUT	2
64	GZ1007	3/8" NYLON LOCKNUT	9
65	GZ1735	1/4" CAGE NUT	6
66	GZ1418	ROD NUT	1
67	13300	3/4" SELF-TAP SCREW	2
68	GZ1084	GUIDE ROD LOCKNUT	4
69	GZ1069	3/8" SERRATED WASHER	2
70	GZ1085	GUIDE ROD WASHER	4
71	GZ1419	3/8" SERRATED WASHER	1
72	GZ1431	GUIDE ROD WASHER	1
73	GZ1052	1" NYLON WASHER	3
74	GZ1018-07	LARGE SNAP RING	2
75	GZ1679	3/4" WASHER	2
76	GZ1012-12	3/8 X 1 1/4" BTTN SCRW	2
77	130965	1/2" NYLON WASHER	4
78	GZ1012-08	3/8 X 5/8" BUTTON SCRW	2
79	14063	1/4" WASHER	2
80	GZ1018-04	SMALL SNAP RING	2
81	GZ5124-07	SEAT COVER	1
82	GZ1013-14	1/4 X 3/8" SCREW	2
83	GZ9352	BUNGEE CORD	1
84	GZ1081	BUNGEE TIE	2
85	GZ1758	HANDGRIP RING	2
86	GZ1504	BASE TRIM	1
	0	NON-ILLUSTRATED PARTS	0
		WHAT PART IS NEEDED?	
#	GZ7472	USER'S MANUAL	1
#	GZ7472FR	USER'S MANUAL	1
#	GZ7472G	USER'S MANUAL	1
#	GZ7472IT	USER'S MANUAL	1
#	GZ7472SP	USER'S MANUAL	1
		WHAT PART IS NEEDED?	
#	GZ7003	DECAL, 10-POUND WARNING	1
#	GZ7003FR	DECAL, 10-POUND WARNING	1
#	GZ7003G	DECAL, 10-POUND WARNING	1
#	GZ7003IT	DECAL, 10-POUND WARNING	1
#	GZ7003SP	DECAL, 10-POUND WARNING	1
		WHAT PART IS NEEDED?	
#	GZ7005	DCL, MOVING PARTS CAUTION	1
#	GZ7005FR	DCL, MOVING PARTS CAUTION	1
#	GZ7005G	DCL, MOVING PARTS CAUTION	1
#	GZ7005IT	DCL, MOVING PARTS CAUTION	1
#	GZ7005SP	DCL, MOVING PARTS CAUTION	1
		WHAT PART IS NEEDED?	
#	GZ7026	DECAL, PIN INSERT CAUTION	1
#	GZ7026FR	DECAL, PIN INSERT CAUTION	1
#	GZ7026G	DECAL, PIN INSERT CAUTION	1
#	GZ7026IT	DECAL, PIN INSERT CAUTION	1
#	GZ7026SP	DECAL, PIN INSERT CAUTION	1
#	196913	DECAL, KEEP CLEAR CAUTION	1

EXPLODED DRAWING—Model No. GZFI8156.1

R0507A



EXPLODED DRAWING—Model No. GZFI8156.1

R0507A

